



Quick Installation Guide

T-Base Professional

Raytech AG
Oberebenenstrasse 11
CH 5620 Bremgarten
Switzerland



1 Introduction

For a proper and straight forward installation of T-Base Professional, it is strongly recommended to perform the following steps in the order listed.



2 Install T-Base Pro on your Computer

It's recommended to store the install file 'setup.exe' on your computer and execute it by double click. Follow the instructions and accept license agreement.



NOTE:

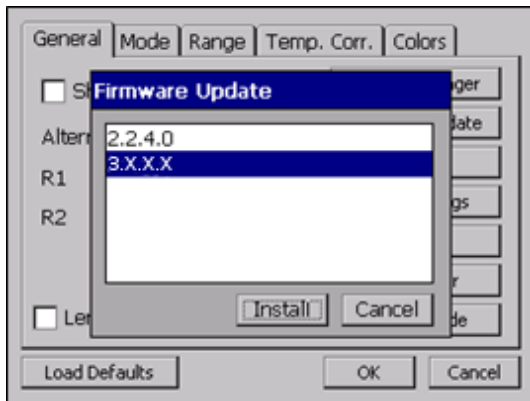
You will need to have admin rights to properly install T-Base Professional on your Computer:



3 Update Instruments Firmware

Update the Firmware of your Raytech Measuring Systems to newest Version as follows:

3.1 For all WRxx Systems and for TR-Mark II:



Copy the new Firmware (.zip file) onto your USB key on the root directory (Not in a sub-directory, do not Unzip it).

Connect the USB-key to the instrument and press install. The system will detect and automatically install the new firmware and restart the system.



NOTE:

Latest device firmware files and update tools can be found in:

[%APPDATA%/Raytech\Firmware](#)

T-Base Version 3 or can update firmware fully automatically

3.2 For TR-Mark II:

Find in the Windows Start Menu the following folder and start TR-MK2 Firmware TR Mark II Flash Loader.

Connect your TR-Mark II to RS 232 Interface and follow instruction on your computer.

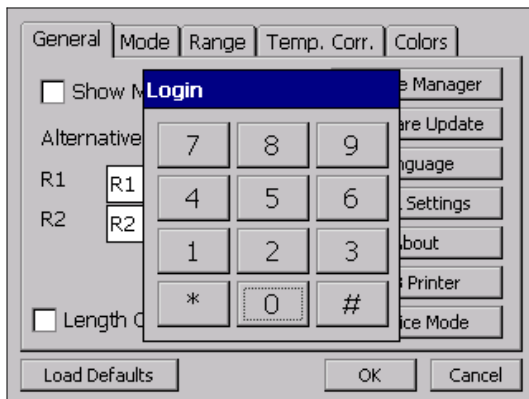




4 Enable USB communication on instruments

Enable USB communication on your instrument as follows:

For all WR-xx Systems:



In the "General" Menu press "Service Mode"
and input:
2001#

For TR-Mark III:

General
↓



Press "Setup" and then in the "General" Menu
choose "Service".
Input 2001#

For TR-Mark II:

No action needed (there is no USB Interface).



Contacts

Raytech Switzerland

Raytech AG
Oberebenestrasse 11
5620 Bremgarten

Phone: +41 56 648 6010

Mail: welcome@raytech.ch

Web: www.raytech.ch

Your local Representative

