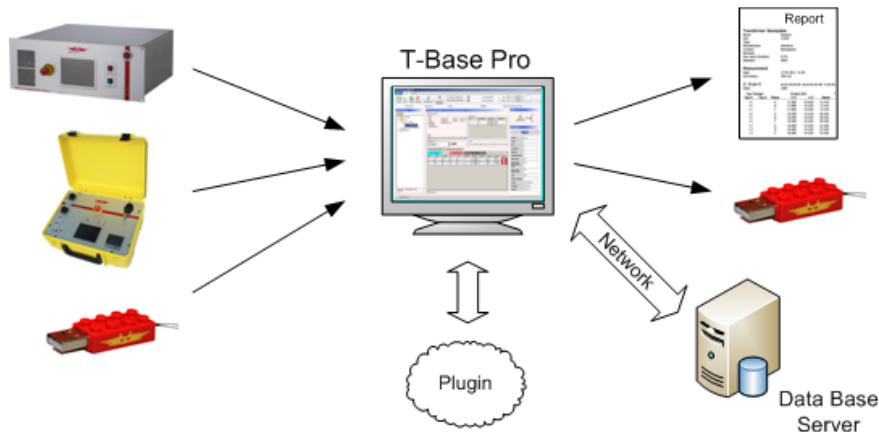




Description

T-Base Pro is a powerful tool to remote control Raytech test instruments, data exchange and analyse measured data of it. It runs on every windows based PC and a modern graphical user interface makes it easy and a pleasure to operate. Any custom request or special feature can easily be added with a custom Add-On.

Example



Advantages & Features

- Import transformer name plate data and measuring results from devices by USB with a few clicks
- Generate transformer name plate data sets on your PC and export them to devices
- View measurement data in a table or diagram
- Control devices by remote (option)
- Generate, save and print test reports
- Store all your data in one database ordered by transformers, not by measuring method
- Use powerful search functions to find your measurements quickly
- Work with a clearly arranged user interface
- Easily integrate individual software plug-ins to expand the T-Base Pro to what ever you need.

Specifications:

Operating Sys:	Min. Win 7, Win 10, Win 11
Hardware	≥ Pentium 4, 3.2GHz, 1GB Ram Core2 recommended
Min. Screen:	1024 x 768 pixel
Recommended:	≥ 1360 x 768 pixel

Included in Delivery

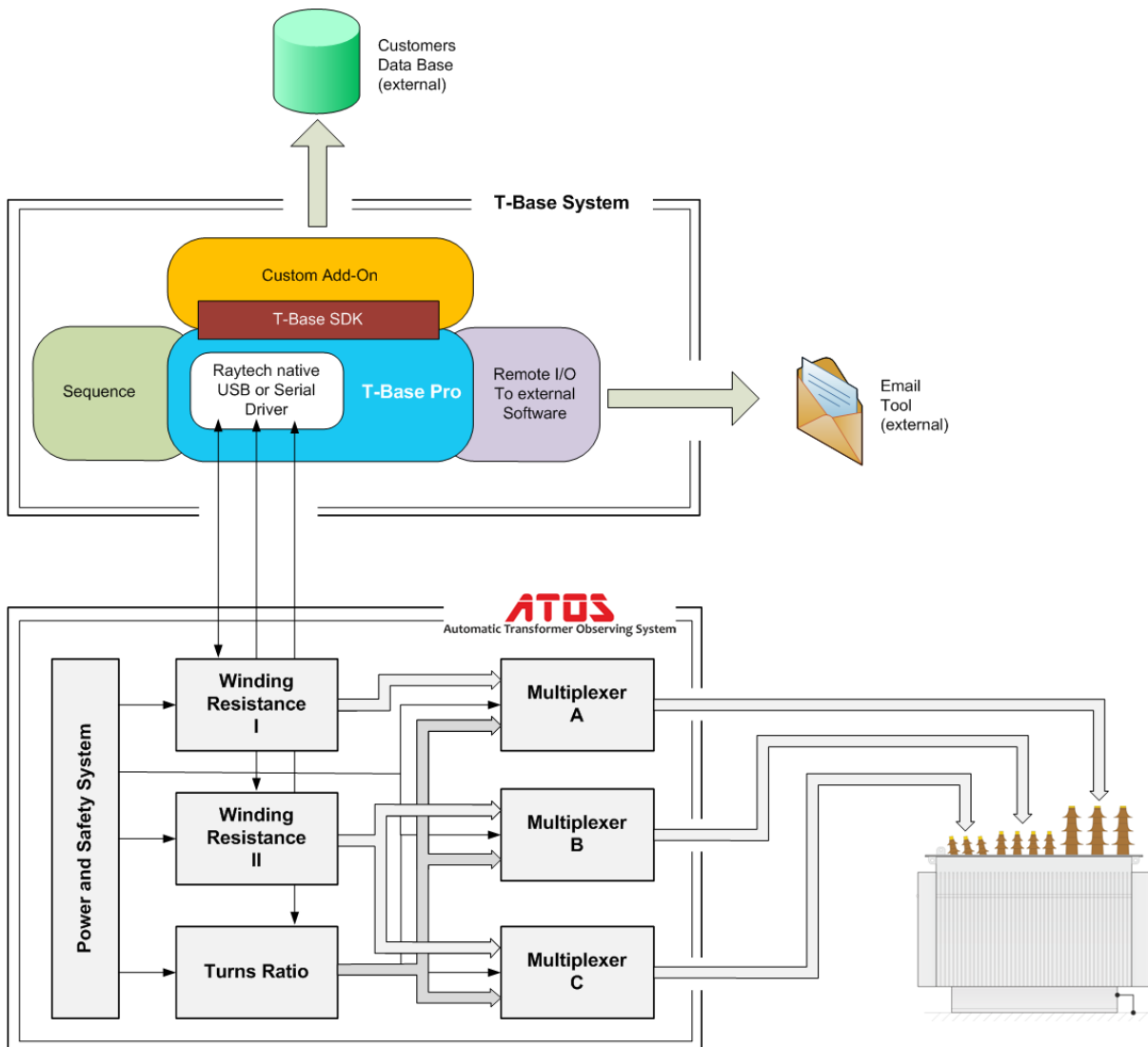
- Native Raytech USB Driver
- Documentation

Options

- Database located on server
- Synchronize with external server



Application Example



Overview

The example shows a powerful measuring system with remote control, data exchange and analysis. Here a Raytech Automatic Transformer Observing System called ATOS is fully controlled by T-Base Pro. Add-Ons complete the functionality to fit in to a transformer fabs test flow. It runs on a windows based PC and is operated on an easy to use graphical user interface.



Description

Raytech Automatic Transformer Observing System **ATOS** combined with **T-Base Pro** software is an extremely powerful system for transformer measurements. With one cabling all winding resistance and turns ratio measurements are done easily. Operation can be done by touch screen on devices, or on a remote computer using **T-Base Pro**.

Compared to measurements with simple devices, measuring with an ATOS leads to drastically reduced measuring time and increased performance. Using **T-Base Pro** makes data collecting with a memory stick unnecessary.

ATOS components are connected by USB or RS232 to your computer. The software link from devices to the operating system is done by **Raytech native Driver**. This driver is included in any T-Base Pro release.

Creation, import and export of transformer profiles and measurements, just as simple manual measurements are done with **T-Base Pro**. Powerful search functions and a modern graphical user interface support users in handling transformer profiles and measuring. **Test Reports** are available in several output formats.

Completely automated measurements of transformers are done with the **Sequence Add-On**. All settings of Raytech devices are available by remote and can be configured individually. And any test procedure based on the available devices can be defined.

In the fictive example, a **Custom Add-On** sends passed transformer measurements in the needed format to the factories data base. Access to any data set in this data base is also provided by this Add-On. Add-Ons can be programmed by Raytech, a customer or a third party by using the provided Software Development Kit (SDK) which is free to everyone.

The Raytech Add-On **Remote I/O to external Software** sends notifications by email to supervisors, when a transformer is tested successfully or if a failure has happened.



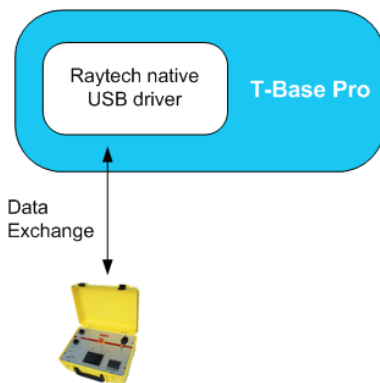
Concept of T-Base Pro

The basic part of T-Base Pro is free to everyone. It consists of Raytech native driver, internal data base, possibilities to create and handle transformers and measurements and of course the graphical user interface.

A Software Development Kit (SDK) to create your own custom Add-On is also provided for free. Proprietary Raytech Add-Ons are purchasable.

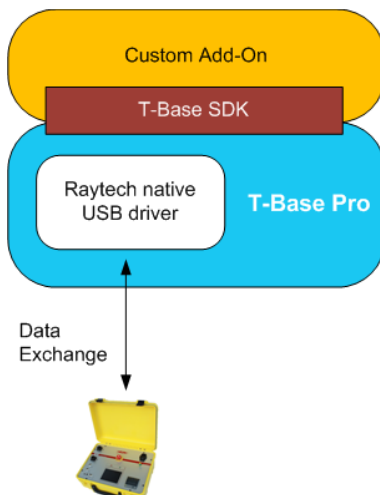
Parts of T-Base Pro

T-Base Pro – totally free



- Import transformer name plate data and measuring results from devices by USB device, USB key or RS232 with a few clicks
- Generate transformer name plate data sets on your PC and export them to devices
- View measurement data in a table or diagram
- Generate, save and print test reports
- Use powerful search functions to find your measurements quickly
- Work with a clearly arranged user interface

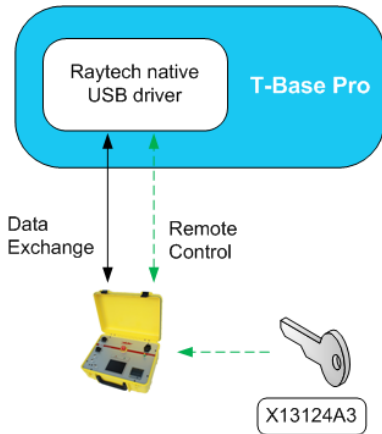
Create your Add-On with free T-Base SDK



T-Base Pro is designed as an open platform. A Software Development Kit (SDK) to create custom Add-Ons easily is provided by Raytech for free.



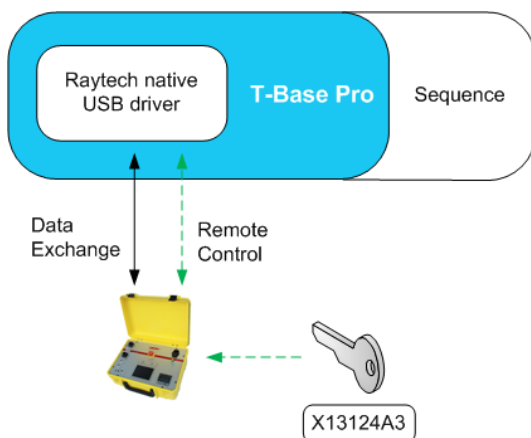
T-Base Pro Remote Option for Raytech Devices



The T-Base Pro remote option of Raytech devices can be unlocked by entering a license key. An unlocked device can be remote controlled by a comfortable graphical user interface on T-Base Pro. No additional programming is needed.

Every T-Base Pro can control several Raytech devices, as long as they are unlocked.

Proprietary Add-On - Sequence

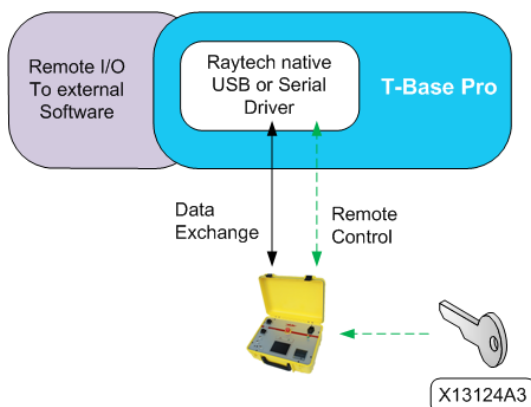


Sequence is an existing Add-On to control Raytech devices and doing complete transformer measurements in a free programmable measuring process, including winding resistance and turns ratio measurements.

Test procedures can be defined individually.

Remote Options for needed Raytech devices are included in Sequence

Proprietary Add-On - Remote I/O to external Software

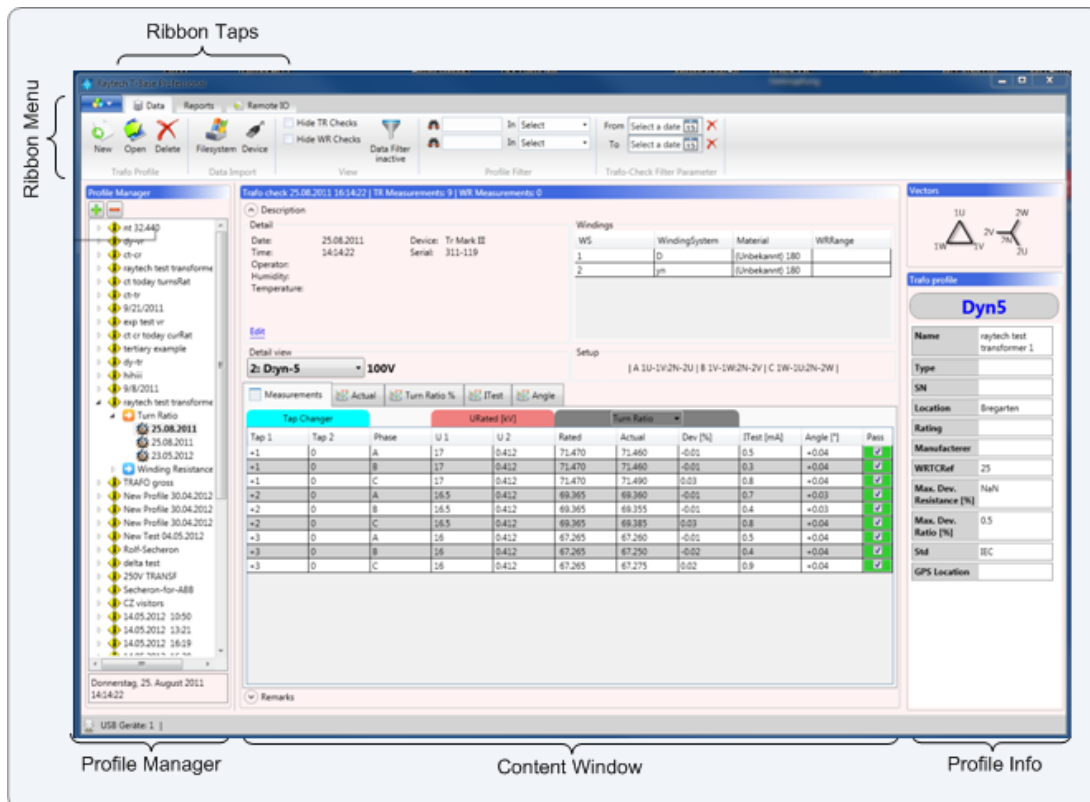


This is a basic Add-On provided by Raytech. It calls any program with a parameter on a PC. An XML file as return value is accepted.



Graphical User Interface

Raytech T-Base Pro has a modern and comfortable graphical user interface. Some of its components and basic functions are explained in the following pages.



Raytech T-Base Pro is a **full multi tasking system**. For instance a measurement with long duration can be started. While it is running, the user can create new profiles, exchange data with other devices, start another measurement and so on.

Every running process will create a new **ribbon tap** in the **ribbon menu** on top of the window.

The **profile manager** on the left side of the window is an explorer, that shows all transformers with its measurements stored in the used data base. A hierarchic illustration helps to get a quick overview.

When a profile is selected in the **profile manager**, on the right boarder the most important information about a transformer and its profile are displayed. The **profile info** section is a useful tool to find a needed profile, when you are browsing manually through your transformer data base. Details of selected profiles and measurements are showed in the **content window**. This section is built up dynamically and changes it's content based on the selection in **profile manager**.



When a device's remote control is chosen, a new **ribbon tab** is created and automatically selected. Running processes like remote control or data exchange will not be affected. The created **ribbon tab** may appear differently for several Raytech devices.

The **device control** section contains all options to set up a device and doing measurements. With a few clicks a measurement is started and results are displayed in the **results section** immediately.

Details about the device's status and communication are shown in **status** section. In the print screen example below a winding resistance meter is connected, its state is safe and data exchange is listed in the console.

The screenshot displays the Raytech software interface with three main sections:

- Device Control:** Located at the top, it includes a menu bar (Close, Enable, Edit, Export, Export to Flash, Connection) and a toolbar. Below the toolbar, there are settings for two channels: CH1 (A-B) and CH2 (a-b). CH1 shows a reading of 0.165 mΩ and CH2 shows -0.071 mΩ. There are also buttons for Start, Stop, and Demag.
- Results Section:** Located in the middle, it features a table with columns for Time, Mode, I/Range, S, and ID. Below the table is a graph showing a stable measurement over time, with a y-axis ranging from 0.160 mΩ to 0.180 mΩ and an x-axis from 0.0000 to 0.0050. A label '+I-A-B' is visible on the right side of the graph.
- Status:** Located on the right side, it shows a 'Safe' status indicator and a console window displaying a log of system events such as 'connecting...', 'connection closed', 'check configuration...', 'measurement start', and 'measurement stop'.



Contacts

Raytech Switzerland

Raytech AG
Oberebenenstrasse 11
5620 Bremgarten

Phone: +41 56 648 6010
Mail: welcome@raytech.ch
Web: www.raytech.ch

Your local Representative

Empty box for local representative information.

Notes